



Make Sure Your
Building Operating Costs are
Headed in the Right Direction

AUTOMATEDLOGIC[®]
CORPORATION

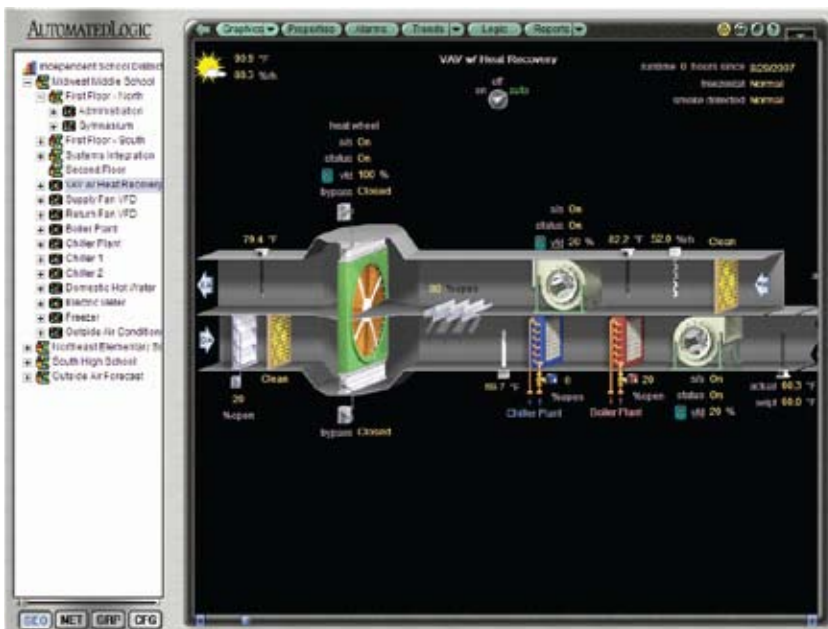
...the power of simplicity

Why spend time comparing Building Automation Systems? Choose Automated Logic's WebCTRL, and save your energy.

When it comes to energy-saving features, we're thinking *inside* the box.

Sure, other building automation systems have energy-saving features. But many require additional programming to integrate them. That means more time and expense as well as operating complexity. And as we all know, the more difficult anything is to use, the less likely it will be.

In this era of energy management, that's not an option. Building automation systems need to operate simply and effectively, balancing energy conservation with workplace comfort.



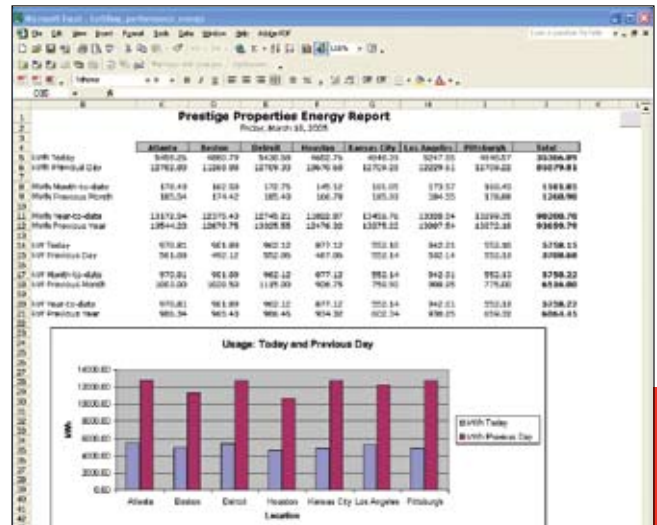
"Here at the County, in one year, we've been able to achieve 25% reduction in energy consumption. And most of it is due to WebCTRL and its capabilities."

Vince Fuentes
Energy Manager
Bexar County, Texas



WebCTRL's energy-saving features are fully integrated, so they're ready right out of the box. Features like:

- *Setpoint Optimization* – calculates optimum setpoint values based on actual operating requirements
- *Optimum Start* – assures comfortable settings at time of occupancy based on building conditions and system capacity. Optimum Start calculates and retains the profile of each building zone, delaying resumption of HVAC until the latest time necessary to avoid jeopardizing comfort.
- *Demand Reduction* – reduces energy use on a short-term basis in response to utility pricing, billing criteria, regional consumption, etc. In addition, Demand Setpoint Reset automatically adjusts heating and cooling setpoints in low priority zones, reducing energy demand over multiple periods of time.
- *Source-to-Load Matching* – calculates need for heating and cooling zone by zone, communicating requirements to mechanical system units. Units automatically adjust setpoints on a zone-by-zone basis.



We took the easy approach. Just like we always do.

WebCTRL's energy-saving features are as easy to learn and use as its other capabilities, including:

- *Thermographic Color Floor Plans* – quickly communicate system-wide comfort and operating conditions
- *Hierarchical and Group Scheduling* – supports customized, graphically displayed schedules for building, floors, zones or equipment groups to flexibly manage energy use
- *Trending* – enables operators to track and troubleshoot building conditions
- *Logging/Reporting* – extracts and formats data from browser to Acrobat®, Excel® and other applications with a single click



"Our prediction at the time was we'd be saving about 30% in energy use on an annual basis by installing ALC controls and by making some other energy conservation measure improvements... within a year we'll probably exceed the 30% savings that we had estimated."

Alan Hebert, E.E.
 Project Manager
 Department of Utilities and Energy Management
 Cornell University

Combined with its browser-based access, superior graphics and unequalled operational freedom, WebCTRL can help you better analyze your energy consumption, develop more effective conservation strategies and ultimately save on operating costs.

So save your energy – starting today. For more information, contact your local authorized dealer, call us at 770/429-3000 or visit our website, www.automatedlogic.com.



Automated Logic Corporation
1150 Roberts Boulevard
Kennesaw, Georgia 30144 USA
770/429-3000
770/429-3001 Fax

www.automatedlogic.com



An ISO 9001
Registered Company

AUTOMATED LOGIC[®]
CORPORATION

©2007, Automated Logic Corporation. Automated Logic, the Automated Logic logo, WebCTRL and the WebCTRL logo are registered trademarks of Automated Logic Corporation. All other trademarks are the property of their respective owners.
CSENERGY